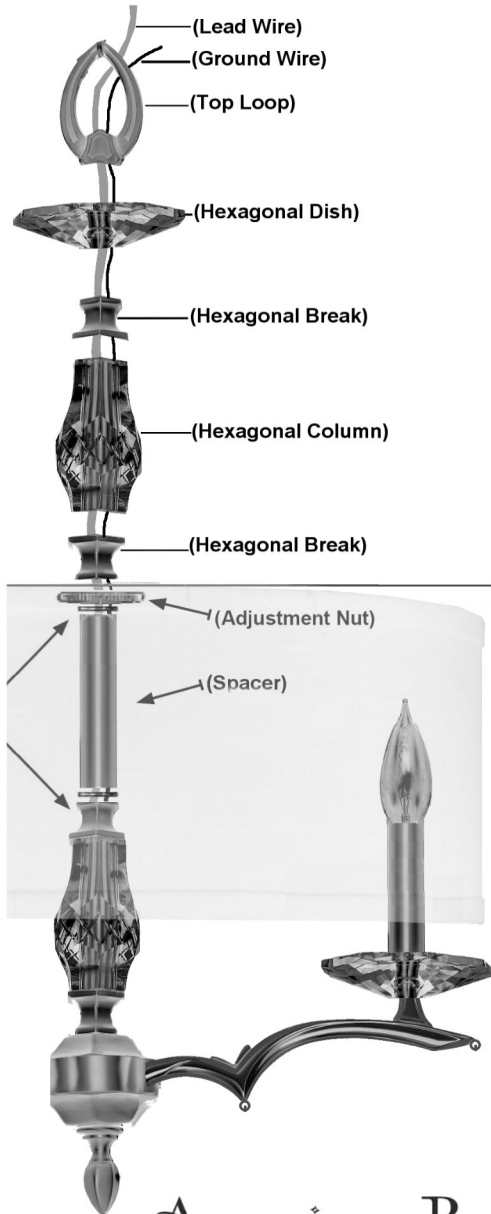


Shade Placement Detail

To place the shade on the center column, unscrew and remove the top 5 components on the middle rod. First remove the top loop, then the Hex. dish, then the Hex. break, then the Hex. column and lastly remove the second Hex. break. On the top should be the adjustable nut. Do NOT remove. Thread the Lead Wire through the hole in the shade crossbar and place the shade on top of the adjustable nut. Then replace all of the components you removed before, making sure that the Hexagonal sides of each of the 5 components is in alignment.

Tighten down to secure.

Shade Goes Here



American Brass & Crystal

Casting a Finer Light

American Brass & Crystal

Casting a Finer Light



CH5602

American Brass and Crystal provides the finest quality components manufactured, designed and finished by master artisans. We take great pride in our production abilities and we empower our valued customers with the ability to custom create the light that is perfect for them.

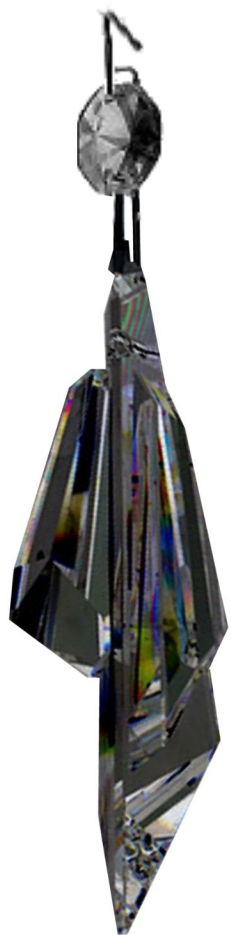
Enclosed are detailed instructions on how to properly assemble and install your chandelier. If you have any questions please call our toll free customer service hotline at: **1-(877)-465-5617**

American Brass and Crystal
835 Lehigh Avenue, Union, NJ 07083

www.abclighting.net



Crystal Component Detail



Letter: A

Shape: (G) Glacial Drop
3" G w/14mm Octagon

Quantity: 11

Connect to the middle and outer holes on each arm and connect to the hole on the bottom center finial.

Note: Diagrams are just representative

Crystal Trimming Directions

Begin trimming your chandelier after all of the electrical connections have been made, the lights have been tested and the chandelier is in good working order. Begin trimming in Alphabetical order. Do not unwrap the next letter until previous one is complete.

